

PROJECT: LOT 20305

Scale: N.T.S

Drawn by: Fahud

Checked by:

Date: 16th August 2021

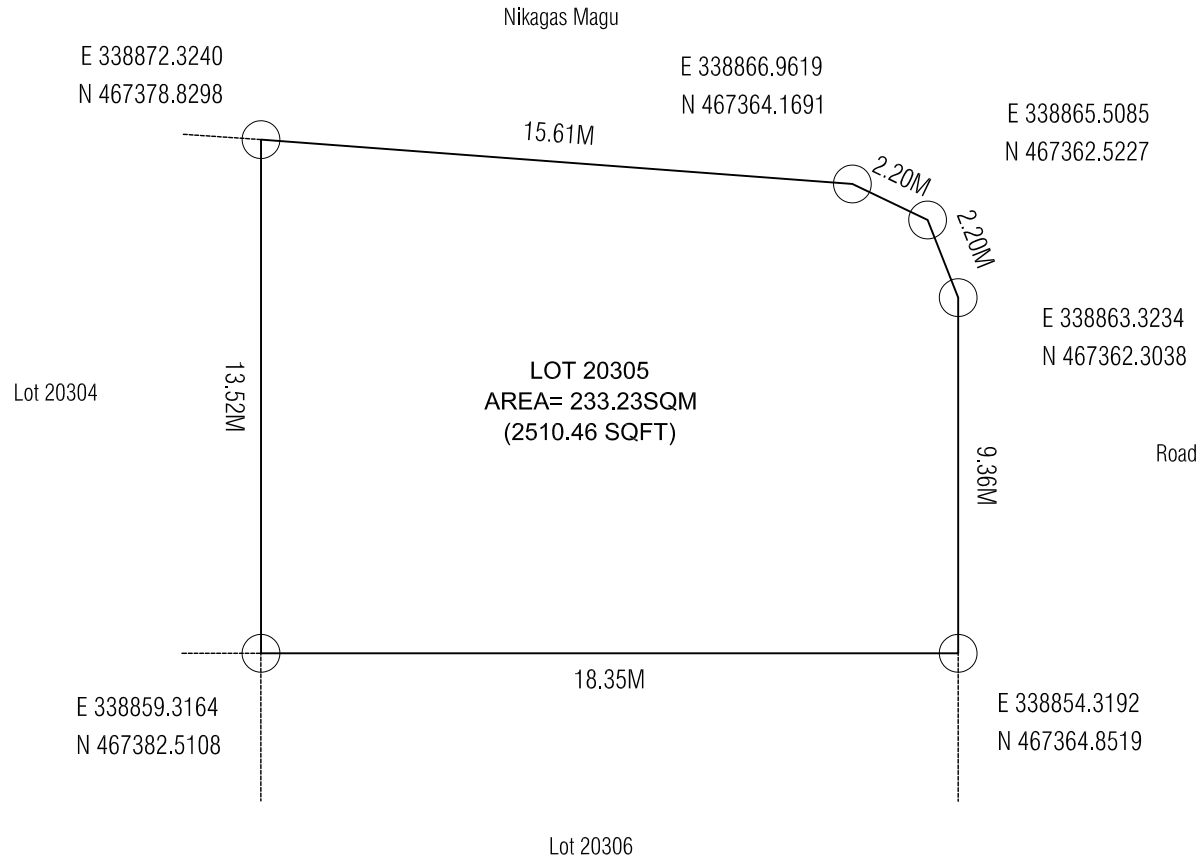
Remarks:

DRAWING: LOCATION MAP



HOUSING  
DEVELOPMENT  
CORPORATION

PLANNING AND DEVELOPMENT DEPARTMENT  
3RD FLOOR, HDC BUILDING HULHUMALE'  
REPUBLIC OF MALDIVES  
TEL. +(960)3353535, FAX +(960)3358892  
EMAIL : planning@hdc.com.mv



PROJECT: LOT 20305

Scale: N.T.S

Drawn by: Fahud

Checked by:

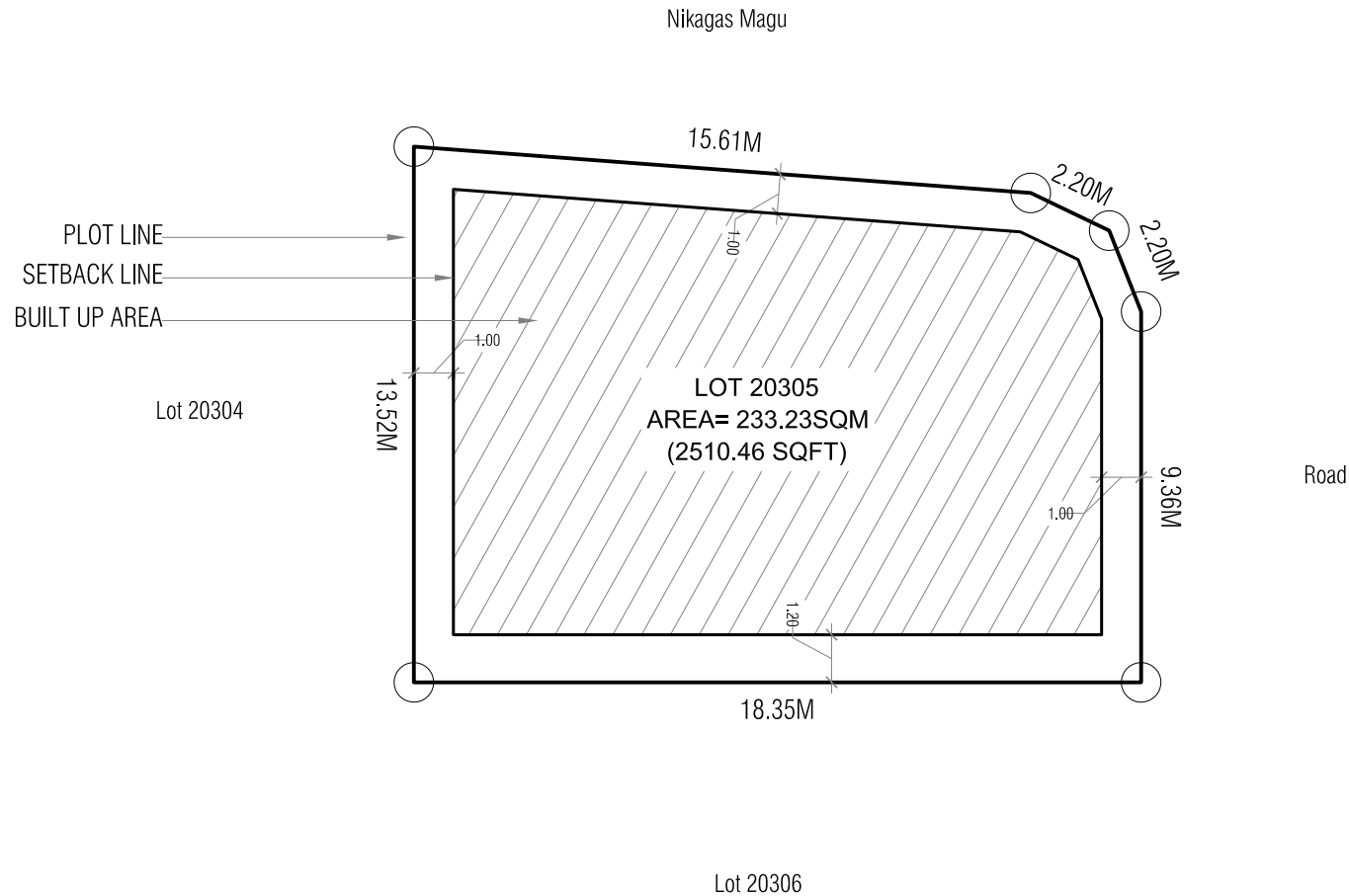
Date: 16th August 2021

Remarks:

DRAWING: PLOT MAP



HOUSING  
DEVELOPMENT  
CORPORATION  
PLANNING AND DEVELOPMENT DEPARTMENT  
3RD FLOOR, HDC BUILDING HULHUMALE'  
REPUBLIC OF MALDIVES  
TEL. +(960)3353535, FAX +(960)3358892  
EMAIL : planning@hdc.com.mv



Lot Number	Description	Land Use	Plot Area	Footprint	Plot Ratio	Site Coverage	Max Floors/Height
20305	P2 Beach Plots	Pure Residential	233.23 SQM	172.57 SQM	4.0	74%	6 Floors/22.5m (18.5m bldg height +4m Lift Machine Room)
			2,510.46 SQFT	1,857.5 SQFT			