

PROJECT: LOT 20317

Scale: N.T.S

Drawn by: Jilan

Checked by:

Date: 16th August 2021

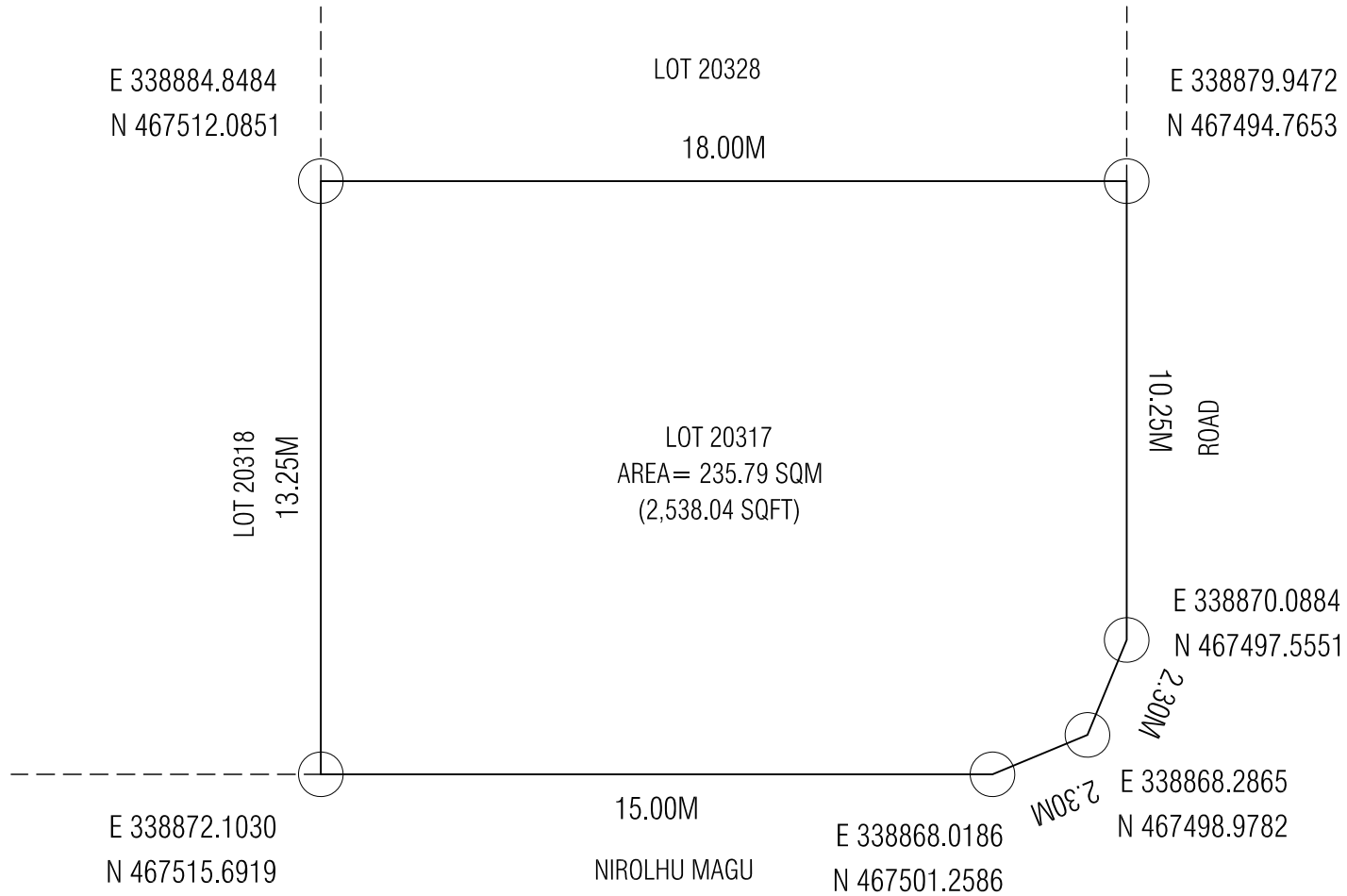
Remarks:

DRAWING: LOCATION MAP



HOUSING  
DEVELOPMENT  
CORPORATION

PLANNING AND DEVELOPMENT DEPARTMENT  
3RD FLOOR, HDC BUILDING HULHUMALE'  
REPUBLIC OF MALDIVES  
TEL. +(960)3353535, FAX +(960)3358892  
EMAIL : planning@hdc.com.mv



PROJECT: LOT 20317

Scale: N.T.S

Drawn by: Jilan

Checked by:

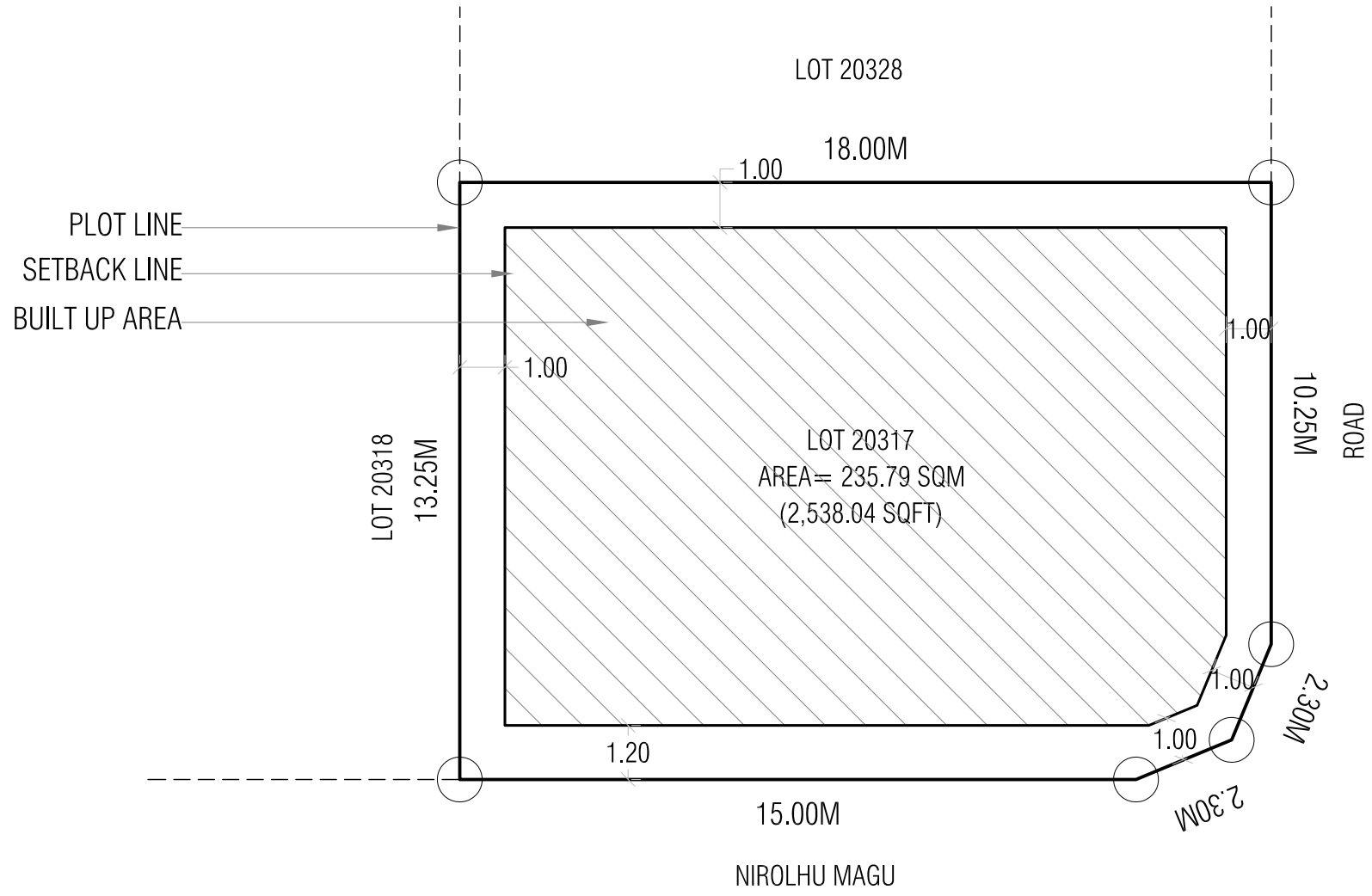
Date: 16th August 2021

Remarks:

DRAWING: PLOT MAP



HOUSING DEVELOPMENT CORPORATION  
PLANNING AND DEVELOPMENT DEPARTMENT  
3RD FLOOR, HDC BUILDING HULHUMALE'  
REPUBLIC OF MALDIVES  
TEL. +(960)3353535, FAX +(960)3358892  
EMAIL : planning@hdc.com.mv



Lot Number	Description	Land Use	Plot Area	Footprint	Plot Ratio	Site Coverage	Max Floors/Height
20317	P2 Beach Plots	Pure Residential	235.79 SQM	175.71 SQM	4.0	75%	6 Floors/22.5m (18.5m bldg height +4m Lift Machine Room)
			2,538.04 SQFT	1,891.33 SQFT			

PROJECT: LOT 20317

DRAWING: SETBACK PLAN

Scale: N.T.S

Drawn by: Jilan

Checked by:

Date: 16th August 2021

Remarks:

**HOUSING DEVELOPMENT CORPORATION**  
 PLANNING AND DEVELOPMENT DEPARTMENT  
 3RD FLOOR, HDC BUILDING HULHUMALE'  
 REPUBLIC OF MALDIVES  
 TEL. +(960)3353535, FAX +(960)3358892  
 EMAIL : planning@hdc.com.mv